



## 17 The Limes Bridge Road

Kings Langley, WD4 8FJ

**Guide Price £695,000**

Situated in the sought-after area of Hunton Bridge, Kings Langley, this beautifully presented home offers an exceptional blend of contemporary style, comfort, and practical family living.

Boasting three generously sized bedrooms, including a superb principal bedroom with ensuite shower room, the property provides well-balanced accommodation ideally suited to families and professionals alike.

At the heart of the home is a stunning open-plan kitchen, dining and living space, designed for modern lifestyles and effortless entertaining. The dining area is enhanced by two sets of bi-fold doors, creating a seamless connection between the interior and the garden while flooding the space with natural light. Two separate reception rooms offer excellent flexibility, whether used as a cosy family lounge, home office, playroom, or formal sitting room.

Externally, the property benefits from a detached garage equipped with an EV charging point, providing excellent storage, secure parking, or potential workshop space. The attractive setting on Bridge Road combines is situated with convenient access to local amenities, excellent transport links, and nearby countryside walks.

This impressive home presents a rare opportunity to enjoy stylish, versatile living in one of the area's most desirable locations. Early viewing is highly recommended.

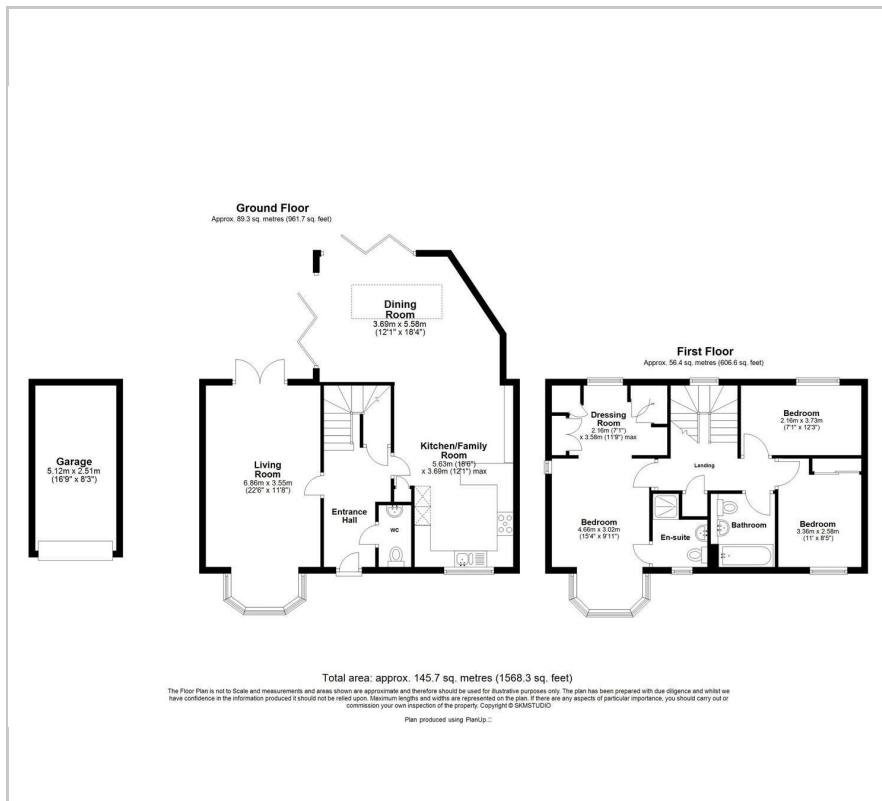
- Stunning Three Bedroom Family Home
- Impressive Open Plan Kitchen, Dining And Living Space
- Luxurious Master Bedroom With Ensuite
- Two Further Generous Bedrooms
- Additional Large Reception Room
- Detached Garage With EV Charging Point
- Stunning Outside Garden Space
- Move In Ready
- Beautifully Presented Throughout
- Close To Local Amenities And Transport Links

### Viewing

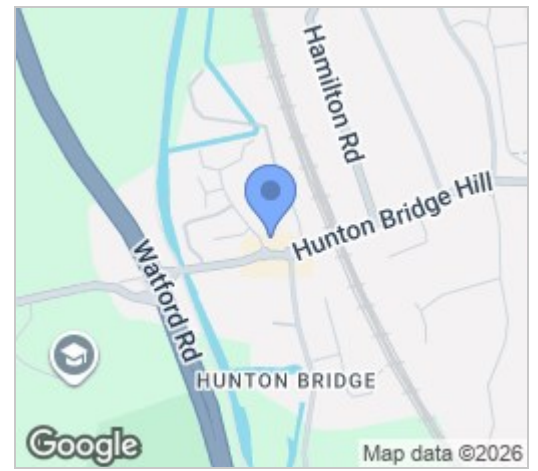
Please contact our Abbots Langley Office on 01923262666 if you wish to arrange a viewing appointment for this property or require further information.



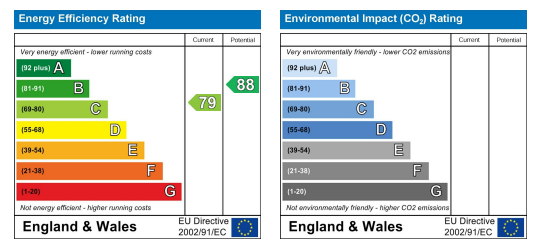
# Floor Plan



# Area Map



# Energy Efficiency Graph



These particulars, whilst believed to be accurate are set out as a general outline only for guidance and do not constitute any part of an offer or contract. Intending purchasers should not rely on them as statements of representation of fact, but must satisfy themselves by inspection or otherwise as to their accuracy. No person in this firm's employment has the authority to make or give any representation or warranty in respect of the property.